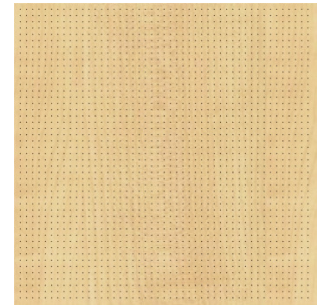


## Wood Optic Powder Coating – 'ARTline'



Pattern: Maple



Pattern: Acacia

In order to provide you with a visually pleasant finish, we will furnish our metal ceilings with various wood optic surfaces according to your request.

'ARTline' wood surface is created by a complex powder coating process that allows the usage on interior and exterior ceiling systems, as well as on ceilings that fulfil your requirements regarding cooling capacity and fire security.

The coating has proven to be UV-resistant and shows high durability against different chemicals and solvents.

To improve the acoustic in the installation area, 'ARTline' metal ceilings are also available with a variety of perforation patterns and acoustic-fleece-backing.

As a perforated surface may narrow the effect of the wood optic, we recommend the bargain of a micro-perforated ceiling, such as the perforation pattern Rg 0,7-4 with a hole diameter of 0.7 mm and open area of 4 %.

The 'ARTline' surface has been tested and approved according to the following requirements:

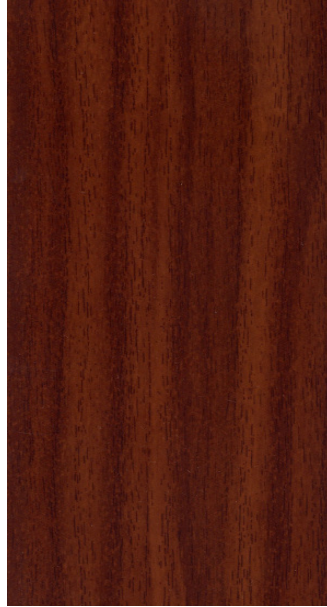
- Building Material Class A2-s1,d0 according to EN 13501-1
- Class A according to ASTM E 84

Subject to change without notice. This document is intellectual property of Amstorf based Lindner Holding KGaA. It may neither be duplicated, exploited for business purposes nor shown to any third parties without our approval. Please note that all details, schemes, pictures and dimensions shown in this document are without commitment and might vary due to final project requirements. Especially all figures shown in inch are rough dimensions only. Our O&M manuals, Installation Guidelines, Product Specification Sheets, etc. and the installation of Lindner products are exclusively foreseen for persons with special metal ceiling knowledge. For safety reasons all others are not allowed to use Lindner's products. Lindner ceilings must be installed as a complete system. Missing, wrong or by other products substituted components, additional loads by services, for e.g. luminaires and airflows not approved by Lindner can cause failure of the complete ceiling system. Lindner ceilings are high-quality products for the interior only. All performances mentioned in our documents are subject to correct installation according to our company's manuals and Standard Terms and Conditions.

## Available Surfaces – M1 Standard Pattern:



Acacia 1



Acacia 2



Acacia 3



American Walnut 1



Black Cherry 1



Beech 1

Subject to change without notice. This document is intellectual property of Arnstorf based Lindner Holding KGaA. It may neither be duplicated, exploited for profit, distributed for business purposes nor shown to any third parties without our approval. Please note that all details, schemes, pictures and dimensions shown in this document are without commitment and might vary due to final project requirements. Especially all figures shown in inch are rough dimensions only. Our O&M manuals, Installation Guidelines, Product Specification Sheets, etc. and the installation of Lindner products are exclusively foreseen for persons with special metal ceiling knowledge. For safety reasons all others are not allowed to use Lindner's products. Lindner ceilings must be installed as a complete system. Missing, wrong or by other products substituted components, additional loads by services, for e.g. luminaires and fixtures not approved by Lindner can cause failure of the complete ceiling system. Lindner ceilings are high-quality products for the interior only. All performances mentioned in our documents are subject to correct installation according to our company's manuals and Standard Terms and Conditions.



## Available Surfaces – M1 Standard Pattern:



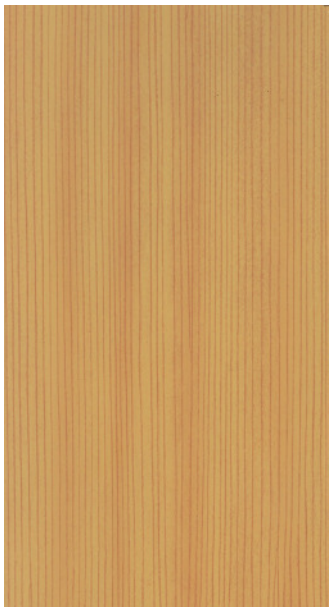
Douglas Fir 1



Douglas Fir 2



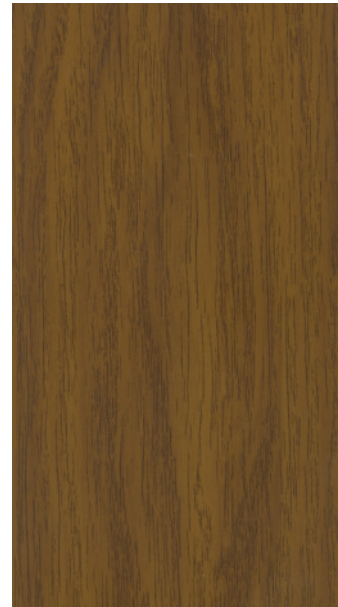
Douglas Fir 3



Douglas Fir 4



Oak 1



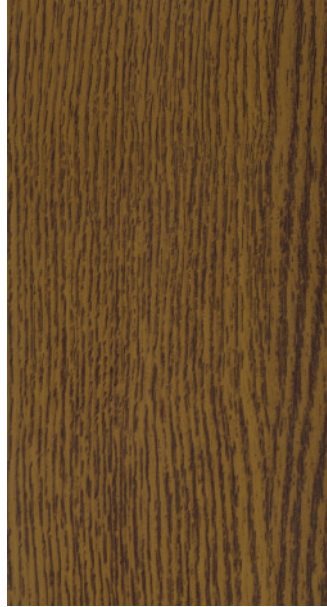
Oak 2

Subject to change without notice. This document is intellectual property of Arnstorf based Lindner Holding KGaA. It may neither be duplicated, exploited for profit, distributed for business purposes nor shown to any third parties without our approval. Please note that all details, schemes, pictures and dimensions shown in this document are without commitment and might vary due to final project requirements. Especially all figures shown in inch are rough dimensions only. Our O&M manuals, Installation Guidelines, Product Specification Sheets, etc. and the installation of Lindner products are exclusively foreseen for persons with special metal ceiling knowledge. For safety reasons all others are not allowed to use Lindner's products. Lindner ceilings must be installed as a complete system. Missing, wrong or by other products substituted components, additional loads by services, for e.g. luminaires and fixtures not approved by Lindner can cause failure of the complete ceiling system. Lindner ceilings are high-quality products for the interior only. All performances mentioned in our documents are subject to correct installation according to our company's manuals and Standard Terms and Conditions.

## Available Surfaces – M1 Standard Pattern:



Oak 3



Oak 4



Oak 5



Oak 6



Oak 7



Oak 8

Subject to change without notice. This document is intellectual property of Arnstorf based Lindner Holding KGaA. It may neither be duplicated, exploited for profit, distributed for business purposes nor shown to any third parties without our approval. Please note that all details, schemes, pictures and dimensions shown in this document are without commitment and might vary due to final project requirements. Especially all figures shown in inch are rough dimensions only. Our O&M manuals, Installation Guidelines, Product Specification Sheets, etc. and the installation of Lindner products are exclusively foreseen for persons with special metal ceiling knowledge. For safety reasons all others are not allowed to use Lindner's products. Lindner ceilings must be installed as a complete system. Missing, wrong or by other products substituted components, additional loads by services, for e.g. luminaires and fixtures not approved by Lindner can cause failure of the complete ceiling system. Lindner ceilings are high-quality products for the interior only. All performances mentioned in our documents are subject to correct installation according to our company's manuals and Standard Terms and Conditions.

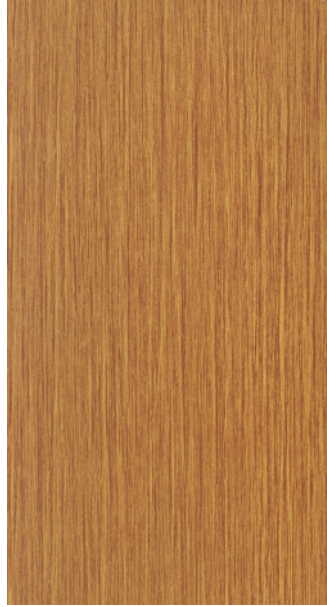


**Available Surfaces – M1 Standard Pattern:**

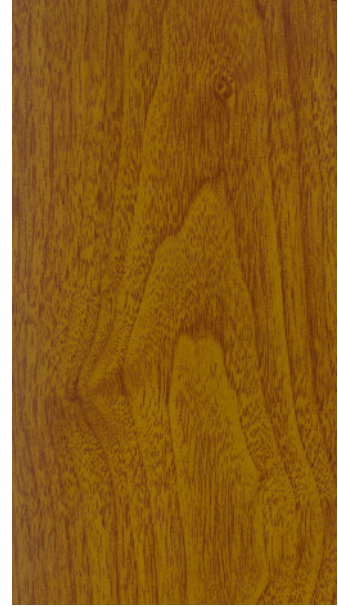
Subject to change without notice. This document is intellectual property of Arnsdorf based Lindner Holding KGaA. It may neither be duplicated, exploited for profit, distributed for business purposes nor shown to any third parties without our approval. Please note that all details, schemes, pictures and dimensions shown in this document are without commitment and might vary due to final project requirements. Especially all figures shown in inch are rough dimensions only. Our O&M manuals, Installation Guidelines, Product Specification Sheets, etc. and the installation of Lindner products are exclusively foreseen for persons with special metal ceiling knowledge. For safety reasons all others are not allowed to use Lindner's products. Lindner ceilings must be installed as a complete system. Missing, wrong or by other products substituted components, additional loads by services, for e.g. luminaires and fixtures not approved by Lindner can cause failure of the complete ceiling system. Lindner ceilings are high-quality products for the interior only. All performances mentioned in our documents are subject to correct installation according to our company's manuals and Standard Terms and Conditions.



Oak 9



Oak 11



Golden Classic 1



Chestnut 1



Chestnut 2



Cherry 1

**Available Surfaces – M1 Standard Pattern:**

Subject to change without notice. This document is intellectual property of Arnsdorf based Lindner Holding KGaA. It may neither be duplicated, exploited for profit, distributed for business purposes nor shown to any third parties without our approval. Please note that all details, schemes, pictures and dimensions shown in this document are without commitment and might vary due to final project requirements. Especially all figures shown in inch are rough dimensions only. Our O&M manuals, Installation Guidelines, Product Specification Sheets, etc. and the installation of Lindner products are exclusively foreseen for persons with special metal ceiling knowledge. For safety reasons all others are not allowed to use Lindner's products. Lindner ceilings must be installed as a complete system. Missing, wrong or by other products substituted components, additional loads by services, for e.g. luminaires and fixtures not approved by Lindner can cause failure of the complete ceiling system. Lindner ceilings are high-quality products for the interior only. All performances mentioned in our documents are subject to correct installation according to our company's manuals and Standard Terms and Conditions.



Cherry 2



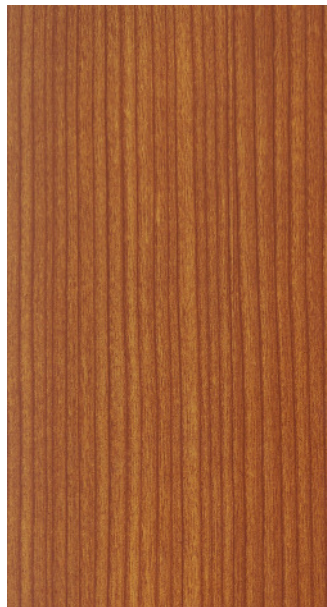
Cherry 3



Cherry 4



Cherry 5



Cherry 6



Pine 1



## Available Surfaces – M1 Standard Pattern:



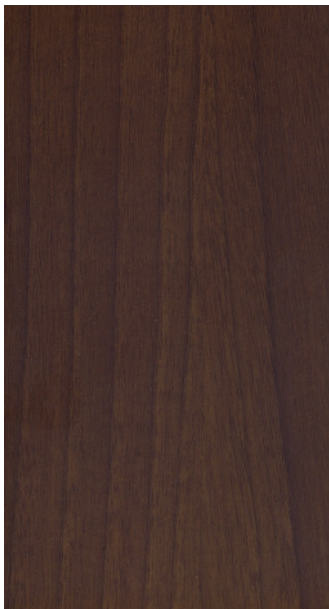
Pine 2



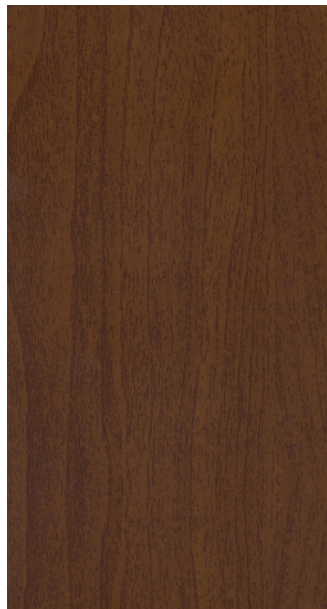
Teak 1



Walnut 1



Walnut 2



Walnut 3



Walnut 4

Subject to change without notice. This document is intellectual property of Arnstorf based Lindner Holding KGaA. It may neither be duplicated, exploited for profit, distributed for business purposes nor shown to any third parties without our approval. Please note that all details, schemes, pictures and dimensions shown in this document are without commitment and might vary due to final project requirements. Especially all figures shown in inch are rough dimensions only. Our O&M manuals, Installation Guidelines, Product Specification Sheets, etc. and the installation of Lindner products are exclusively foreseen for persons with special metal ceiling knowledge. For safety reasons all others are not allowed to use Lindner's products. Lindner ceilings must be installed as a complete system. Missing, wrong or by other products substituted components, additional loads by services, for e.g. luminaires and fixtures not approved by Lindner can cause failure of the complete ceiling system. Lindner ceilings are high-quality products for the interior only. All performances mentioned in our documents are subject to correct installation according to our company's manuals and Standard Terms and Conditions.

**Available Surfaces – M1 Standard Pattern:**

Subject to change without notice. This document is intellectual property of Arnsdorf based Lindner Holding KGaA. It may neither be duplicated, exploited for profit, distributed for business purposes nor shown to any third parties without our approval. Please note that all details, schemes, pictures and dimensions shown in this document are without commitment and might vary due to final project requirements. Especially all figures shown in inch are rough dimensions only. Our O&M manuals, Installation Guidelines, Product Specification Sheets, etc. and the installation of Lindner products are exclusively foreseen for persons with special metal ceiling knowledge. For safety reasons all others are not allowed to use Lindner's products. Lindner ceilings must be installed as a complete system. Missing, wrong or by other products substituted components, additional loads by services, for e.g. luminaires and air ducts not approved by Lindner can cause failure of the complete ceiling system. Lindner ceilings are high-quality products for the interior only. All performances mentioned in our documents are subject to correct installation according to our company's manuals and Standard Terms and Conditions.



Walnut 5



Walnut 6



Walnut 7



Walnut 8



Burl Wood 1

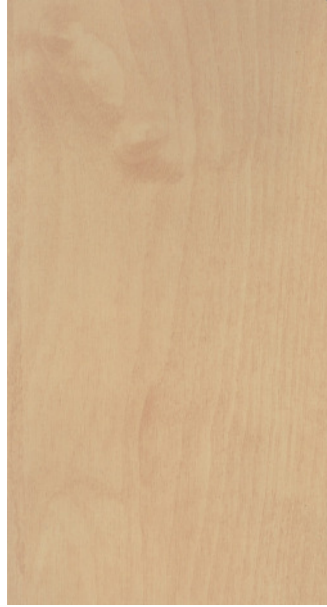


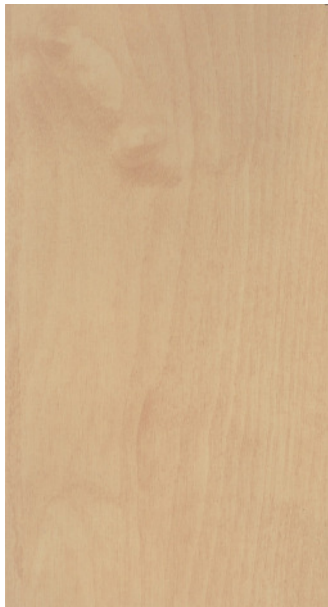
Burl Wood 2



**Available Surfaces – M2 Special Pattern:**

Subject to change without notice. This document is intellectual property of Arnstorf based Lindner Holding KGaA. It may neither be duplicated, exploited for profit, distributed for business purposes nor shown to any third parties without our approval. Please note that all details, schemes, pictures and dimensions shown in this document are without commitment and might vary due to final project requirements. Especially all figures shown in inch are rough dimensions only. Our O&M manuals, Installation Guidelines, Product Specification Sheets, etc. and the installation of Lindner products are exclusively foreseen for persons with special metal ceiling knowledge. For safety reasons all others are not allowed to use Lindner's products. Lindner ceilings must be installed as a complete system. Missing, wrong or by other products substituted components, additional loads by services, for e.g. luminaires and fixtures not approved by Lindner can cause failure of the complete ceiling system. Lindner ceilings are high-quality products for the interior only. All performances mentioned in our documents are subject to correct installation according to our company's manuals and Standard Terms and Conditions.

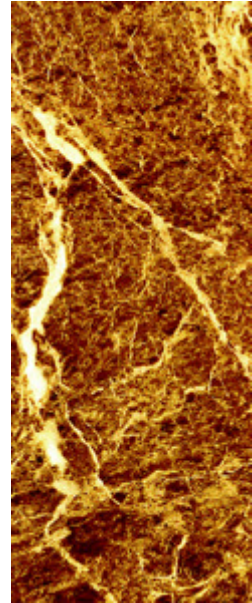
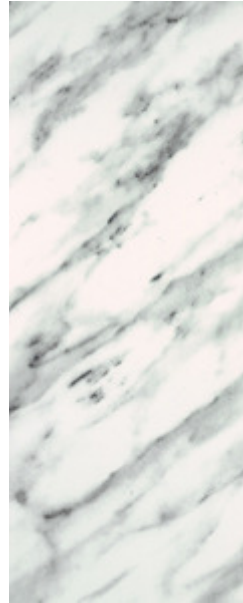
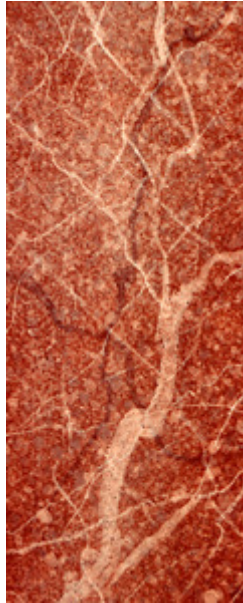
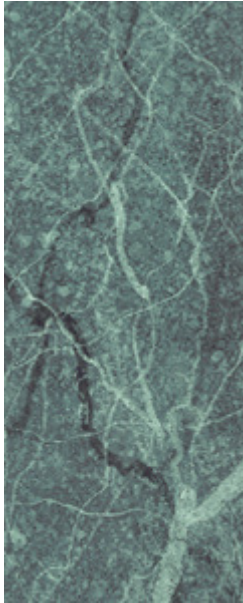

**Anegre 1 SP**

**Birch 1 SP**

**Oak 10 SP**

**Hard Maple 1 SP**

**Cherry 7 SP**

To our customer's convenience, we additionally offer an exclusive alternative to wood optic: Lindner metal ceilings may even be coated with marble or granitic patterns as well as with different flora and fauna themes.

### Available Surfaces:



### Notice:

**Depending on the particular type of monitor and printer used, colours of portrayed surfaces may deviate from the original.**