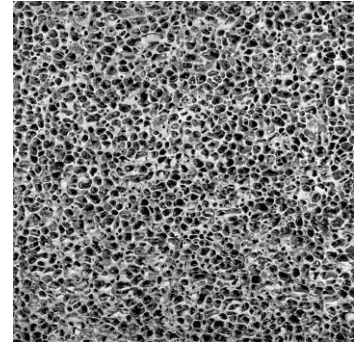
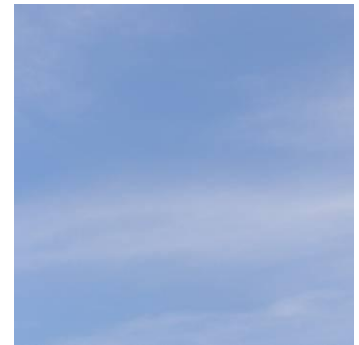


GRAPHICline – Print technology



Pattern: Aluminium foam



Pattern: Sky

The possibilities of GRAPHICline allow your premises to create unique atmospheres.

Apply your desired image colour-fast, gloss-fast and light-fast, with a photo-realistic resolution of up to 1200 dpi, to a great variety of surface textures and materials.

All colours and images may be printed on panels of any required size.

The advantages of GRAPHICline metal ceilings at a glance:

- UV-resistant
- Various microperforations combined with acoustic inlays allow for good sound absorbing properties without interfering with the visual effect
- A variety of surface-finishes is available:
For application in e.g. offices, entrance areas, conference rooms as well as moist rooms

Applications - Examples



Subject to change without notice. This document is intellectual property of Arnstorf based Lindner Group. It may neither be duplicated, exploited for profit, distributed for business purposes nor shown to any third parties without our approval. Please note that all details, schemes, pictures and dimensions shown in this catalogue are without commitment and might vary due to final project requirements. Especially all figures shown in inch are rough dimensions only. Our O&M manuals, Installation, Recommendations, Product Specification Sheet, etc. and the installation of Lindner products are exclusively foreseen for persons with special metal ceiling knowledge. For safety reasons, all others are not allowed to use Lindner's products. Lindner ceilings must be installed as a complete system. Missing, wrong or by other products substituted components, additional loads by services for e.g. luminaires and not by Lindner approved anchors can cause failure of the complete ceiling system. Lindner ceilings are high-quality products for the interior only. All in our documents mentioned performances are subject to correct installation according to our company's manuals and Standard Terms and Conditions

Motifs - Examples



Subject to change without notice. This document is intellectual property of Arnstorf based Lindner Group. It may neither be duplicated, exploited for profit, distributed for business purposes nor shown to any third parties without our approval. Please note that all details, schemes, pictures and dimensions shown in this catalogue are without commitment and might vary due to final project requirements. Especially all figures shown in inch are rough dimensions only. Our O&M manuals, Installation Recommendations, Product Specification Sheet, etc. and the installation of Lindner products are exclusively foreseen for persons with special metal ceiling knowledge. For safety reasons, all others are not allowed to use Lindner's products. Lindner ceilings must be installed as a complete system. Missing, wrong or by other products substituted components, additional loads by services for e.g. luminaires and not by Lindner approved anchors can cause failure of the complete ceiling system. Lindner ceilings are high-quality products for the interior only. All in our documents mentioned performances are subject to correct installation according to our company's manuals and Standard Terms and Conditions.

Subject to change without notice. This document is intellectual property of Arnstorf based Lindner Group. It may neither be duplicated, exploited for profit, distributed for business purposes nor shown to any third parties without our approval. Please note that all details, schemes, pictures and dimensions shown in this catalogue are without commitment and might vary due to final project requirements. Especially all figures shown in inch are rough dimensions only. Our O&M manuals, Installation Recommendations, Product Specification Sheet, etc. and the installation of Lindner products are exclusively foreseen for persons with special metal ceiling knowledge. For safety reasons, all others are not allowed to use Lindner's products. Lindner ceilings must be installed as a complete system. Missing, wrong or by other products substituted components, additional loads by services for e.g. luminaires and not by Lindner approved anchors can cause failure of the complete ceiling system. Lindner ceilings are high-quality products for the interior only. All in our documents mentioned performances are subject to correct installation according to our company's manuals and Standard Terms and Conditions.

